

Atlantic Ego

CLASSIC WATER HEATER BENEFITING FROM ALL ATLANTIC KNOW-HOW



+ PRODUCT

COMFORT

- Classic water heater benefiting from all Atlantic know-know
- French style design
- Flat chromed thermometer

QUALITY - DURABILITY

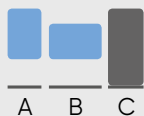


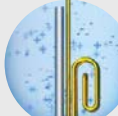
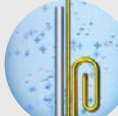
- Magnesium anode for strengthened tank protection
- New generation diamond-quality enamel (glass-lined inner tank)
- Pressure relief valve
- Dielectric union
- Specific lip gasket to avoid corrosion around flange

USER-FRIENDLINESS

- IP 24 - full compliance with European standards for electrical safety and user protection
- Plug*
- Heating light indicator

SAVINGS

- Mechanical thermostat with integrated security
- High-efficiency water inlet
- CFC-free high-density insulation for more energy savings

ELECTRIC WATER HEATER		30 TO 120 L (VERTICAL WALL-MOUNTED)	50 TO 100 L (HORIZONTAL WALL-MOUNTED)
 <p>Model available**</p>	 <p>Temperature regulation</p>	 <p>More hot water</p>	<p>MAGNESIUM ANODE</p>  <p>Tank protection</p>
			 <p>Copper heating element</p>

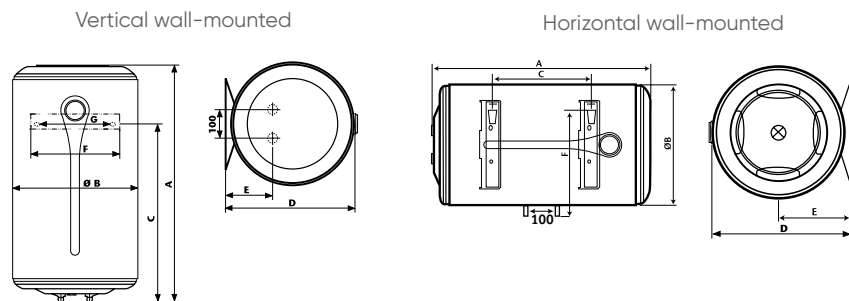
*Depending on models - **Model types: A: Vertical wall-mounted / B: Horizontal wall-mounted / C: Floor-standing

Atlantic Ego



- 1 External thermometer
- 2 Diamond-quality enamel (glass-lined inner tank)
- 3 Optimised stainless outlet pipe
- 4 Magnesium anode
- 5 Sheathed immersion heating element
- 6 Inlet diffuser
- 7 Heating light indicator
- 8 High-density polyurethane foam 0% CFC

INSTALLATION DIMENSIONS



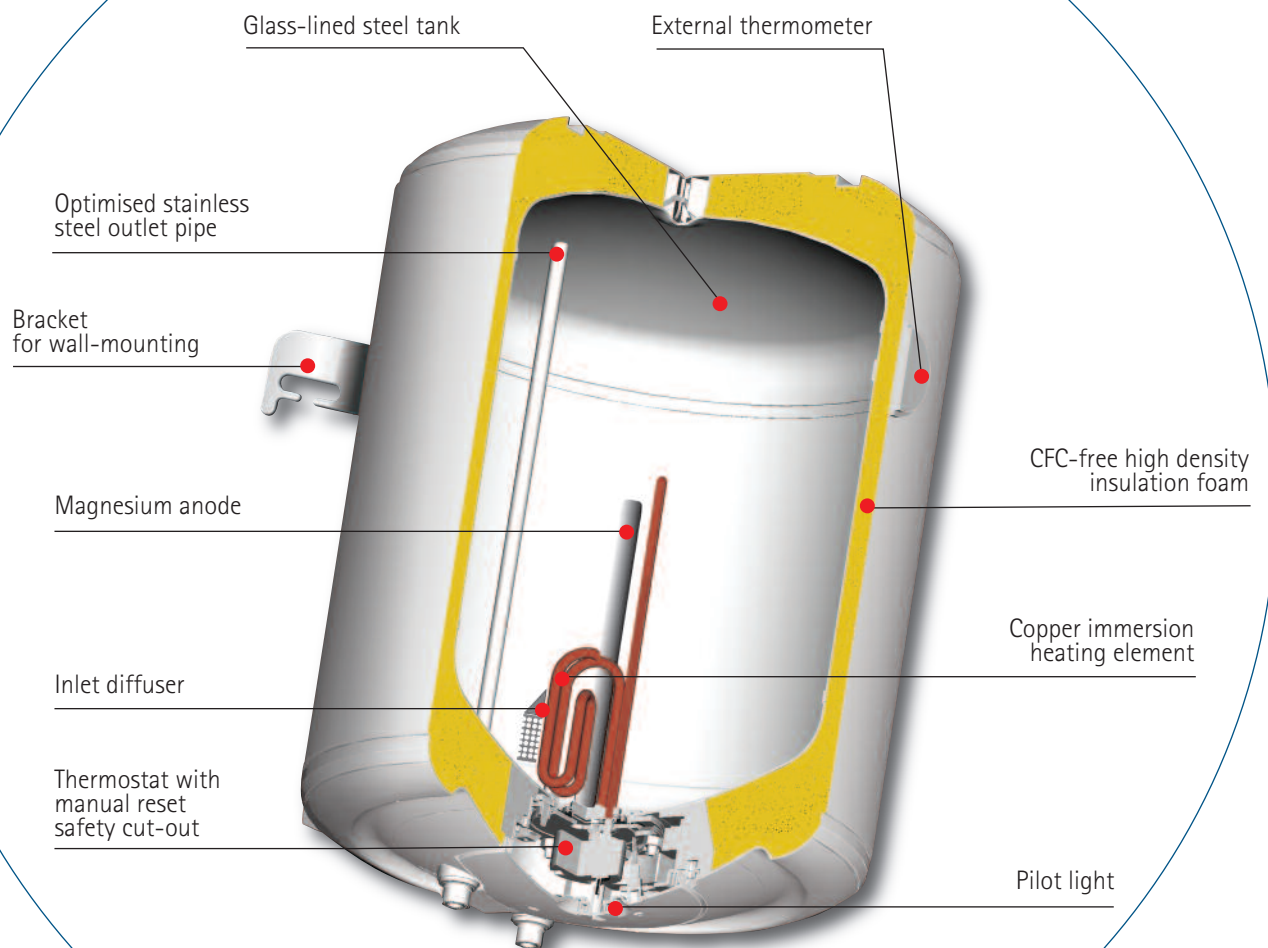
TECHNICAL DATA

CAPACITY (L)	OUTPUT (W)	VOLTAGE (V)	ENERGY CONSUMPTION (kWh/24h at 65°C)	HEAT-UP TIME AT 60°C (ΔT=50°C)
Atlantic Ego Vertical wall-mounted				
30	1200	230 (220/240)	0.63	1h19
50	1500	230 (220/240)	0.95	2h04
80	1500	230 (220/240)	1.40	3h28
100	1500	230 (220/240)	1.85	4h11
120	1500	230 (220/240)	2.15	5h17
Atlantic Ego Horizontal wall-mounted				
50	1500	230 (220/240)	1.15	1h48
80	1500	230 (220/240)	1.55	2h53
100	1500	230 (220/240)	1.95	3h58

DIMENSIONS

CAPACITY (L)	DIMENSIONS (mm)							FLANGE OPENING (Ø) mm	NET WEIGHT (kg)	ERP ENERGY CLASS	PROFILE
	A	B	C	D	E	F	G				
Atlantic Ego Vertical wall-mounted											
30	448	433	248	451	158	300	239	72	11.5	C	S
50	612	433	382	451	158	300	239	72	15	C	M
80	859	433	592	451	158	300	239	72	21	C	L
100	1021	433	742	451	158	300	239	72	24	C	L
120	1184	433	917	451	158	300	239	72	29	C	L
Atlantic Ego Horizontal wall-mounted											
50	596	433	198	451	228	346	-	72	15	C	M
80	843	433	349	451	228	346	-	72	21	C	M
100	1005	433	497	451	228	346	-	72	24	C	L

E.series Water heaters





Ratings and dimensions

Vertical wall mounted range

Capacity (L)	Output (W) 230 V	Voltage (V)	Energy Consumption (kWh/24h at 65°C)	Heat-up time at 60°C ($\Delta t=20^\circ\text{C}$)	Heat-up time at 60°C ($\Delta t=50^\circ\text{C}$)
30	1200	230 (220-240)	0,80	0h36	1h30
50	1500	230 (220-240)	0,88	0h48	2h00
80	1500	230 (220-240)	1,32	1h17	3h14
100	1500	230 (220-240)	1,62	1h36	4h02
120	1500	230 (220-240)	1,73	1h41	4h47

Capacity (L)	Dimensions (mm)							Manhole opening (Ø)	Weight empty (kg)
	A	B	C	D	E	F	G		
30	417	433	235	451	165	100 to 280	240	72 mm	14
50	559	433	380	451	165	100 to 280	240	72 mm	16
80	791	433	590	451	165	100 to 280	240	72 mm	20
100	948	433	740	451	165	100 to 280	240	72 mm	22
120	1111	433	906	451	165	100 to 280	240	72 mm	29

(Depending on models)

(For other standards, consult us)

Horizontal wall mounted range

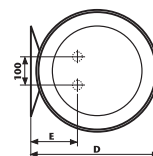
Capacity (L)	Output (W) 230 V	Voltage (V)	Energy Consumption (kWh/24h at 65°C)	Heat-up time at 60°C ($\Delta t=20^\circ\text{C}$)	Heat-up time at 60°C ($\Delta t=50^\circ\text{C}$)
50	1500	230 (220-240)	1,10	0h40	1h40
80	1500	230 (220-240)	1,34	1h06	2h45
100	1500	230 (220-240)	1,85	1h28	3h40

Capacity (L)	Dimensions (mm)						Manhole opening (Ø)	Weight empty (kg)
	A	B	C	D	E	F		
50	542	433	170	451	234	343	72 mm	16
80	774	433	360	451	234	343	72 mm	20
100	931	433	510	451	234	343	72 mm	22

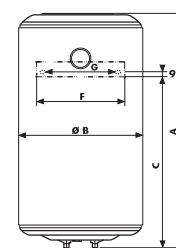
(Depending on models)

(For other standards, consult us)

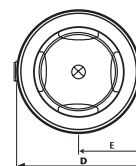
Top view



Vertical model



Top view



Horizontal model

